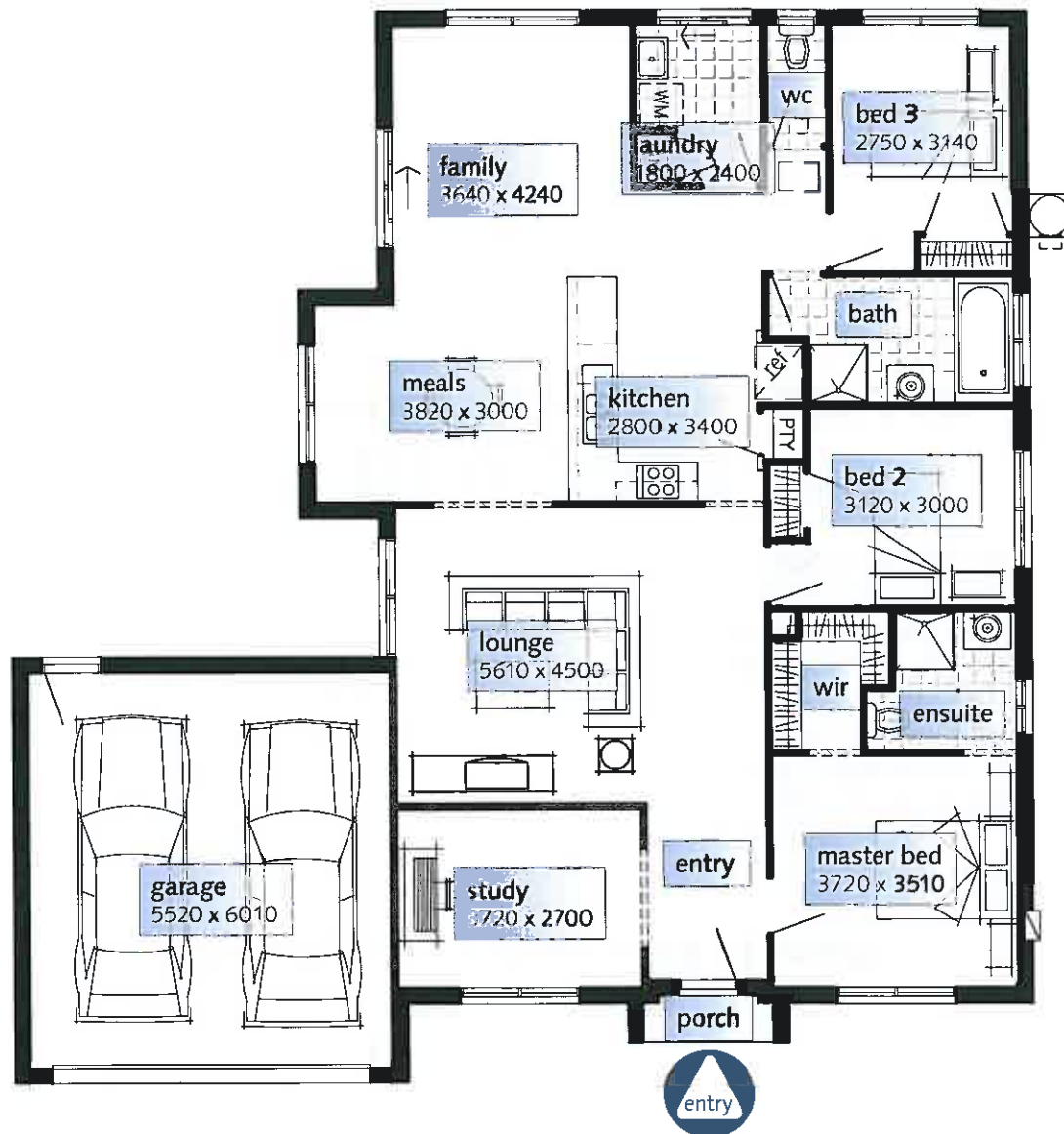




## HOUSE AND LAND PACKAGES ATHERTON 2300



Finance to approved applicants only. Images shown for illustrative purposes and may not represent the final product. Prices are based on availability and price of land. Simonsa reserves the right to alter any price or substitute any home without prior notice. All house and land packages are subject to developers' final approval. In the event that a HomeSite does not have Survey Pegs in place to identify lot boundary then an additional charge will be added to the cost of the house.

